

# Linear Potentionmeter

# Cable Extension Position Sensor



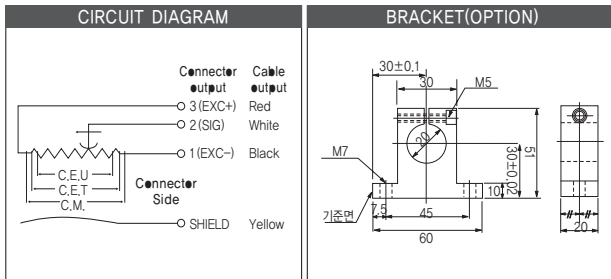
## >Model LPS

Model LPS is a compact style, easily handled strain meter. It is a DC output type and it outputs the ratio of input resistance and output voltage through changes of the interior volume resistance. It could be used for dynamic measurement as well as static measurement.

- As static measurement
- High output
- Superior repeatability
- Easy handling

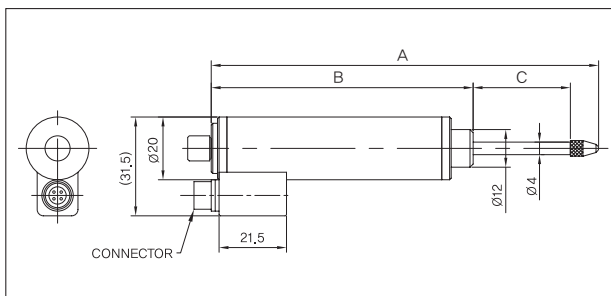
## >SPECIFICATIONS

Specifications	Accuracy	
Rated capacity	10, 30, 50 mm	80, 100 mm
Nonlinearity	± 0.3% F.S	± 0.4% F.S
Hysteresis	± 0.15% F.S	± 0.1% F.S
Non-repeatability	± 0.15% F.S	± 0.1% F.S
Total resistance (±20%)	2kΩ (stroke 10mm), 5kΩ (stroke 30~100mm)	
Temperature range compensated	-10°C ~ 70°C	
Temperature range safe	0°C ~ 60°C	
Excitation Voltage	10V DC	
Cable	Ø4 shield 5m	



## >DIMENSIONS

unit:mm



## >DIMENSIONS TABLE

unit:mm

Stroke	A	B	C
10mm	83.5	63.5	Useful stroke +1.5/-0
30mm	123.5	83.5	Useful stroke +1.5/-0
50mm	163.5	103.5	Useful stroke +1.5/-0
80mm	245	155	Useful stroke +1.5/-0
100mm	265	155	Useful stroke +1.5/-0

★Specifications are subject to change without notice.



## >Model CTP

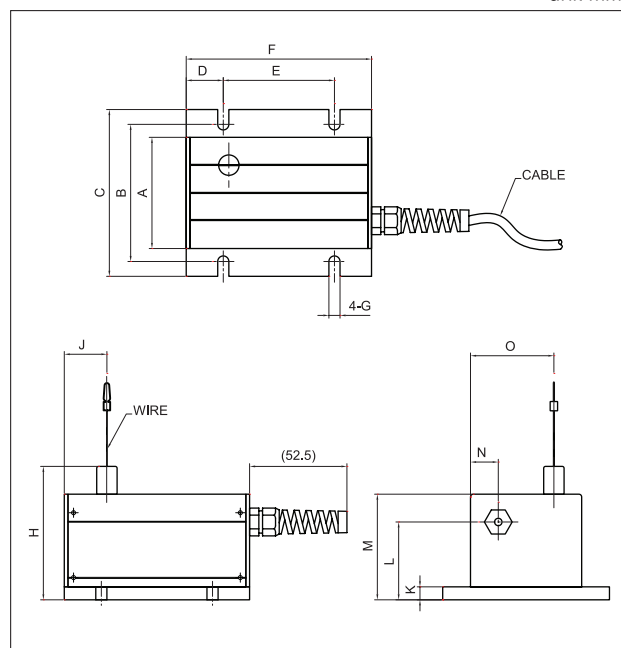
- Measurement of moving distance, position, rotation angle level by using wire
- Widely applied to position control of various facilities and structures.
- It is a resistance output & Voltage output

## >SPECIFICATIONS

Specifications	Accuracy
Full stroke Range	0.5, 1, 2m
Output signal	voltage divider (Potentiometer)
Accuracy	±0.25% F.S
Repeatability	±0.02% F.S
Measuring cable	Ø0.45 stainless steel
Power supply	5V, 10V (max 24V)
Resistance range	0.5m (0 ~ 2.5kΩ), 1m (0 ~ 5kΩ), 2m (0 ~ 10kΩ)
Min.practical independent linearity	±0.15%, < 3000Ω, ±0.075%, ≥3000Ω
Dielectric strength	1,000V rms
Min.insulation resistance	1000MΩ
Maximun noise	1000Q
Max.end voltage	0.25% of input voltage
Cable	Ø4 shield 3m

## >DIMENSIONS

unit:mm



## >DIMENSIONS TABLE

unit:mm

Stroke	A	B	C	D	E	F	G	H	J	K	L	M	N	O
0.5m~1m	60	74	90	20	60	100	6	72	23	7	42	57	15	45
2m	100	119	135	25	65	115	8.5	120.8	26.5	9	74	106	25	87